



EASYFOUNTAIN

# Sherwood Falls

User Instructions - Please keep for future reference

**S45319L**



## Technical Information

Pump Power supply: 4.5V-12V

Pump Power rating: 0.8-6W

Solar Panel supply: 9V

Solar Panel Rating: 5W

Pump Ingress protection: IPX8

Dimensions: H796mm x W443mm x D330mm



These instructions form part of this appliance. Please be sure to read them before use and keep for future reference. This product is for domestic use only and should not be used commercially or for contract purposes.

Produced in PRC for The AMES Companies UK Ltd c/o Easy Fountain  
The Old Airfield, Heck & Pollington Lane, Pollington, East Yorkshire, DN14 0BA  
[www.easyfountain.co.uk](http://www.easyfountain.co.uk) Tel: 01285 762060

S45319L\_Sherwood\_Falls\_IM\_1.1





## Care and safe use guidelines

### SAFETY INFORMATION

- The pump must always be operated in a minimum level of water (head) as marked on the pump, and at least fully submerged.
- Always isolate the electrical supply by fully disconnecting the pump from the solar panel before cleaning the pump, or interconnected LEDs (where supplied).
- Do not route any electrical cables:
  - across walkways;
  - across any grassed area that requires periodic cutting;
  - over any areas where it could cause a trip hazard.
  - on, or across, rough or sharp surfaces that could sever or cause abrasions to the cable.
  - bury the power cable underground as the cable is not armoured.
- Do not allow children to play with any part of this water feature – neither when it's in operation nor disconnected. This can pose risks of electric shock, drowning or poisoning.
- Never drink from the water reservoir nor its flow.
- The cabling of this product must not be cut off nor modified for any purpose including extending the cable length, wiring directly into an electrical spur, or modification of any type. Doing so may cause electrical safety or fire hazards and thereby invalidate the product warranty.
- Do not move the unit when in use. Wait until drained before moving and check that it has been unplugged from the solar panel.
- If the pump's electrical cable becomes damaged, it must never be repaired but the complete pump assembly must be replaced with one of identical characteristics.

### MAINTENANCE

- Before first use, allow the solar panel to charge in at least 4 hours of strong direct sunlight while the panel is disconnected from the pump.
- Have the panel set to 'ON' to allow the battery to charge from sunlight
- Always isolate the electrical supply by fully disconnecting the pump from the solar panel before cleaning the fountain or pump.
- Replace water and clean components regularly to avoid premature parts failure – please refer to trouble shooting for details on this.
- Ensure solar panel is clean and free of any debris before use. Clean with a soft damp cloth, and mild detergent if necessary. Do not use any abrasive substance or cloth for cleaning as this could damage the surface of the panel.
- Never operate the pump before being submerged in water as this will cause it to overheat.
- Top up the water on a regular basis. For effective pump usage the water level must always be 50mm over the water pump when submerged.
- Clean the main body only with a soft damp cloth, and mild detergent if necessary. Do not use any abrasive substance or cloth for cleaning as this could damage the surface of the appliance.
- Never submerge the solar panel in water nor site it in areas likely to flood or pool with water.

### WINTER CARE

- Remove all loose parts and electrical components.
- Empty water from the reservoir. For heavier fountains this can be completed using a large sponge or a simple syphon pipe.
- If water freezes within the fountain this can cause damage.
- If possible, bring your water feature indoors for example in a garage or shed during the winter or periods of extreme weather conditions – they should be stored in a clean, dry environment free from moisture and above 0°C.
- Protective covers are available to purchase to cover the entire water feature, however we cannot guarantee that this will protect it from winter damage.
- Solar panels with rechargeable batteries should only be stored without light exposure for a maximum of 6 months to avoid battery life depreciation

### DISPOSAL



This symbol means that used electrical and electronic equipment (WEEE) should not be mixed with general household waste. For proper treatment, recovery and recycling, please take this product(s) to designated collection points where it will be accepted free of charge. Please contact your local authority for further details of your nearest designated collection point.

- Dispose of batteries according to local regulations.





## Troubleshooting

### No Functionality:

- Ensure solar panel is in direct sunlight.
- Ensure only the pump and LEDs is in contact with water – solar panels should not be submerged in water.
- Ensure solar panel is clean.
- Check all connections are fully inserted and tightly connected.
- Ensure there is sufficient water and pump is fully submerged.
- Place solar panel into strong direct sunlight while switched 'ON' for at least 4 hours to fully charge the unit.
- Ensure Battery is fully charged by following the step above.
- If wanting to operate in battery mode, turn 'OFF' and then 'ON' to reset after charging using the above steps.

### No (or poor) water flow but LEDs working correctly:

Disconnect from solar panel before attempting any of the below suggestions.

- Check the pipe is fully connected onto the pump.
- Check no kinks in pipes to pump assembly.
- Check the pump is fully submerged in water and has at least 5cm (2") of water above it.
- Ensure the pump is not positioned directly under a flow of water produced by the fountain, as this can cause surges in the water flow.
- Remove the pump from water. Unplug and clean all connections between the solar panel and pump. It is advised the connection pins are cleaned with a scouring pad or wire wool to remove any oxidation and then reconnected until watertight.
- Check for a pump blockage – see pump cleaning below.
- Pump cleaning (basic) – remove pump from the water feature: disconnect water pipe and LED light connection(s). Immerse pump into a bucket of warm water then brush debris and algae away from the water screen/inlet slots.
- Pump cleaning (full) - remove pump from water, disconnect water pipe and LED light connection(s). Clean off algae from the water screen/inlet slots then carefully but firmly pull apart the pump's inlet cover (a flat screwdriver or similar tool is useful to help unclip the cover) to reveal the magnetic impeller. Remove the impeller and clean thoroughly; reassemble the pump carefully.

### Poor or no LEDs functionality with water flow working correctly:

Disconnect from solar panel before attempting any of the below suggestions.

- Unscrew all the plastic connector joint(s) between the pump and the LED light cable then pull apart both sides firmly. Clean the exposed metal pins with a scouring pad or wire wool to remove oxidation and restore good electrical contact. Align and push the metal pin(s) back into the connector then screw together to ensure a watertight seal.

## Warranty conditions

### COVERED UNDER WARRANTY

- If it has a crack or leak and has been reported within 30 days from purchase it is under warranty and should be returned complete with electrics and accessories in the original packaging.
- If the paint on the fountain has peeled during normal use and the winter care procedure has been followed, it is under warranty.
- If the fountain has been delivered damaged it must be reported straight away for this to be covered by the warranty.
- If the proof of purchase shows the product was bought within 1 year, a free of charge replacement part can be supplied.
- Please be aware Easy Fountain will ask for proof of purchase. You will be required to provide the following information:
- Your contact details - name, address, contact number, email.

### NOT COVERED UNDER WARRANTY

- Swelling or blistering on the casing of the pump.
- Pump smells of a burning residue.
- If the pump has a visible algae or limescale build up.
- Any damage to the plug or moulded inserts.
- Any damage caused by misuse or severe weather conditions.
- Cracks / leaks that have formed and not reported within 30 days from purchase.
- Paint and/or surface damage/discolouration due to limescale or frost damage.
- The solar panel has a visible build up of dirt and/or debris.

If any of the conditions above are found, it is likely that this is due to incorrect maintenance and the warranty will be void. Do not dispose of any components as further inspection by Easy Fountain may be requested.

Replacement parts are available from Easy Fountain (The AMES Companies UK Ltd), please contact our customer service team at [ukproductsupport@ames.com](mailto:ukproductsupport@ames.com) or call 01285 762 060



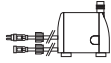


## Parts List

1. Fountain



2. Pump



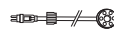
3. Solar Panel & Fixings



4. 2 Way Splitter

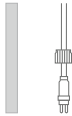


5. LEDs (Pre attached) x2

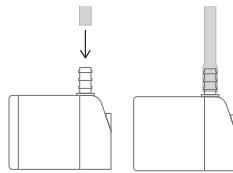


Prior to assembly, read the instructions carefully. Check all parts against this parts list. Carry out assembly on a soft surface to avoid scratching the product. Please retain this information for future reference.

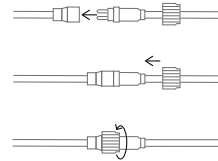
## Assembly Instructions



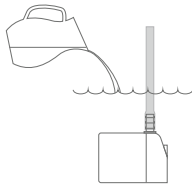
**Step 1:** Reach inside the opening in the rear of the fountain pulling out the water pipe and internal LED cables.



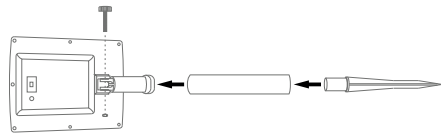
**Step 2:** Connect the tubing to the outlet of the pump and Place pump in the water reservoir through the opening in the rear of the fountain.



**Step 3:** Connect the two ends of the LED lighting wires to the 2-way splitter and splitter into pump cable. Screw over the plastic collars.



**Step 4:** Place the pump and excess LED wires into the access cavity ensuring that the long pump wire extends out through the opening at the back. Carefully fill the fountain with sufficient water ensuring the pump is fully submerged.



**Step 5:** Take the solar panel and connect the bracket to the back of the panel. Then take the two parts that completes the ground stake, connect them together and connect to the bracket. Now place the Solar Panel in ideal location for sunlight.



**Step 6:** Connect the solar cable to the pump cable, making sure to screw over the plastic collar. To operate solar panel in battery backup mode, switch the button to "ON". Your water feature is now ready to use.

**Solar Panel Operation:** When the solar panel button is switched "ON", the battery will charge when in strong sunlight and the water feature will draw power from the battery when needed so long it has charge to do so. When the solar panel button is switched "OFF", the water feature will operate as solar only, it will not use or charge the battery and only operate when in direct sunlight.

